



**REDWOOD  
ACADEMY**



# SCHOOL **PROSPECTUS**



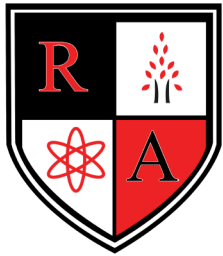
[admissions@redwoodacademy.co.za](mailto:admissions@redwoodacademy.co.za)  
[www.redwoodacademy.co.za](http://www.redwoodacademy.co.za)



011 852 4744



20 TOPAAS STREET  
EXTENSION 7  
LENASIA



# REDWOOD ACADEMY




## G grades 10 to 12 F.E.T PHASE

### OUR METHODOLOGY


The Further Education and Training phase at Redwood Academy offers a dynamic, multi-cultural environment that is entrenched in academic excellence. Learners are provided with the foundation necessary to be successful at tertiary institutions.

Working within a technology enhanced environment, educators provide learners with the guidance and support necessary to hone their work ethic and strive for excellence. In this way, learners are equipped with the skills they need for successful ongoing, lifelong learning, making Redwood Academy a school of choice.



Redwood Academy campus is nestled in the heart of Lenasia in a safe and convenient area.

The classrooms, studios, laboratories and centers all form part of our school's beautiful architecture which incorporates the necessary sporting facilities. The play grounds are spacious and secure with jungle gyms and sports courts available for learners to use.



### GRADE 10

Learners are guided in Grade 9 on choosing subjects and this is reinforced at the beginning of Grade 10 to make sure learners choose the correct subjects. Learners may attend classes in different subjects in the first week of school to make sure they enjoy the subjects they choose.



admissions@redwoodacademy.co.za  
www.redwoodacademy.co.za



20 Topaas Street  
Extension 7  
Lenasia



011 852 4744

## MATRIC

Our learners start preparing for their all-important Matric examination from their first year (Grade 10) in the FET phase. Each of our educators is committed to assisting our learners to achieve their personal goals so that they may enter their chosen profession. Matric learners are prepared holistically for their final year of school study. They receive a Mind Moves demonstration which they can use to ease exam stress, career experts and life coaches are also brought in to motivate the learners and ensure that they enter the final examination period in the right frame of mind. The Matric farewell post the exam period is a highly anticipated event for the matric learners and all the school educators.

## SUBJECTS

The F.E.T. Phase includes compulsory subjects, English H.L., Afrikaans E.A.T. and Life Orientation and 4 additional CAPS approved subjects from the list below:

- Mathematics or Mathematical Literacy
- Physical Sciences, Life Sciences
- Business Studies, Accounting
- Tourism, History, Sports and Exercise Sciences

## SPORTS

The following sports are offered:

- Soccer - Wolves
- Netball
- Table Tennis
- Chess

We are affiliated to the Lenasia Sports Schools and compete in inter-school fixtures with other schools in Lenasia.

## TECHNOLOGY

Teachers use projectors and smart boards or interactive screens for class lessons. Virtual Reality (VR) Goggles are used to enhance the learning process. We also focus on general Computer Literacy.

## SCHOOL TIMES

- **Monday to Thursday:** 8:15am – 2:30pm
- **Friday:** 8:15am – 12:00pm

## FEE STRUCTURE FOR 2026

- **Monthly fee:** R 6 200 per month payable over 12 months.
- **Registration fee:** New Applicants - R 2 900 Current learners - R 2 500
- **After-care:** R 900 per month - Payable over 11 months.  
After care is available Monday - Friday until 17:00.





# WHY REDWOOD ?

## NURTURING LEARNING ENVIRONMENT

Our learners look forward to attending school, where attaining an education can also be enjoyable.

## DYNAMIC TEAM

The school educators and staff are dedicated to helping our learners achieve and exceed their individual goals.

## TECHNOLOGY ENABLED LEARNING

Traditional learning is enhanced with selective use of the latest technology to keep learners engaged.

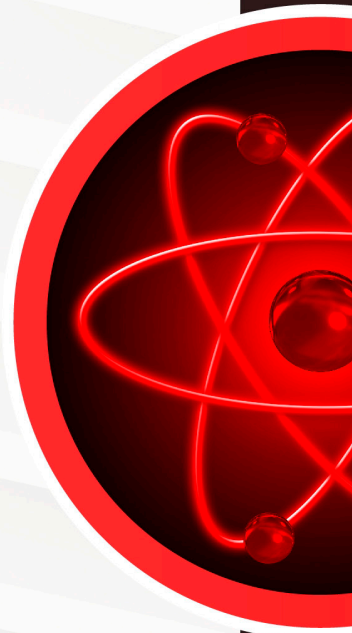
## EMBRACING INDIVIDUALITY

We acknowledge and encourage the unique attributes of each learner within a diverse environment.

COGITATIO  
ET  
HONEREM

RESPECT  
YOUR MIND,  
HONOUR  
YOUR HEART

THOUGHT  
&  
HONOUR



## STEPS TO APPLY:

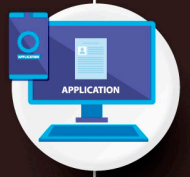


### STEP 1

Visit our Applications Portal at:

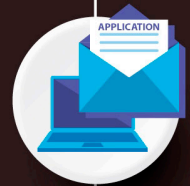
<https://redwoodlenasia.d6plus.co.za/register/>  
OR

Visit [www.redwoodacademy.co.za](http://www.redwoodacademy.co.za), choose a campus and click on Apply Now.



### STEP 2

Fill out the application form online as completely and accurately as possible



### STEP 3

Upload the required documents for the learner and parents viz:

- IDs
- Birth certificate
- Latest Term 2/4 report card
- Etc.



### STEP 4

If your application is successful, a confirmation email will be sent to you with a contract, agreement, declaration and an indemnity. Please complete and return the signed contracts to [admissions@redwoodacademy.co.za](mailto:admissions@redwoodacademy.co.za) to complete the enrolment process.



WELCOME TO OUR REDWOOD FAMILY!

*Learn to love school !!*

“GROWING IS FOREVER...  
*share your journey with us*”





**REDWOOD  
ACADEMY**

### **THE REDWOOD TREE**

*My father once told me a story about an old Redwood tree –  
How she stood tall and proud –  
Her sprawling limbs clothed in emerald green.*

*With a smile,  
he described how she was a mere sapling -  
sheltered by her family and basking  
in the safety of the warm, dappled light.*

*But as this tree grew taller,  
she found herself at the mercy of the cruel wind and the vicious rain.  
Together, they tore relentlessly at her pretty boughs,  
until she felt as though her heart would splinter.*

*After a long, thoughtful pause, my father turned to me and said:  
“One day, the same may happen to you, and when that day comes –  
remember the Redwood tree.*

*Do not worry about the cold wind and the vicious rain –  
do as that tree did and just keep growing”*



@redwoodlenasia



011 852 4744